



THE UNIVERSITY OF THE THIRD AGE

*Learning is forever*

**WARKWORTH**

**Quarterly Newsletter — March 2018**

### FROM THE PRESIDENT

The accelerating speed of change is something of which we are increasingly and uncomfortably aware. In politics, in the English language as spoken, in management jargon, technology, traffic volumes and our local environment the changes are sometimes difficult to accept. The major world problems of natural disasters, inequality, pollution, global warming, violence, terrorism, famines, malnutrition, refugees, and civil wars, many of which are caused by corruption, seem overwhelming. The news we see and hear is full of doom and gloom.

I have been reading a book published in 2016 and reviewed in a recent Listener — *Progress: Ten Reasons to Look Forward to the Future* by Johan Norberg. The author sounds a welcome note of optimism. His research tells him that the greatest ever global improvements have occurred in the last 200 years in food, sanitation, life-expectancy, poverty, violence, the environment, literacy, freedom, equality and opportunities for the next generation. Of course, this overwhelming progress in the past does not guarantee it will continue. We could have large-scale war or terrorism, and people led by fear and superstition can obstruct progress. With our amazing scientific development we need to deal with issues of environmental pollution and we need the political will to reverse the increasing inequality of incomes.

It seems useful to remember the things which are absolutely constant. These include friendships, humour, memories (though these can be unreliable!), the beauty around us and the opportunity to keep learning. I hope that our U3A will continue to be instrumental in providing some of these.

Mary Miller

### New Members

A warm welcome to our new members who have joined since December.

Ngaire Gee

Margaret Wright

(Membership now stands at 157)

### General Meeting: 9th April

#### Mini-Presentation: Lorna Laxon

Lorna, from the Local History group, will speak on the "Hidden Treasures of Warkworth"

#### Main Speaker: Claire McDonald

Claire, on behalf of the Ophthalmology Department of the University of Auckland, will speak on the topic of "Glaucoma"

The prevalence of glaucoma increases with age and our community has a high proportion of people over 65. Since 2013, the Auckland District Health Board has moved to expand its services for glaucoma management and care by involving local qualified optometrists.

### Warkworth U3A Meeting Dates — 2018

March	12 <sup>th</sup>	Committee
April	9 <sup>th</sup>	General Meeting
May	14 <sup>th</sup>	Committee
June	11 <sup>th</sup>	Mid-Winter Luncheon
July	9 <sup>th</sup>	Committee
August	13 <sup>th</sup>	General Meeting
September	10 <sup>th</sup>	Committee
October	8 <sup>th</sup>	General Meeting
November	12 <sup>th</sup>	Committee
December	10 <sup>th</sup>	General Meeting and AGM

Note: General meetings are open to all current members of Warkworth U3A and are held in the Totara Park Community Centre from 10am to 12 noon.

### Mid-Winter Luncheon — 2018

Advance notice for your diaries:—

The mid-winter luncheon will be held at the Warkworth Golf Club on June 11th.

Details to follow.

Warkworth U3A  
PO Box 520  
Warkworth  
New Zealand



THE UNIVERSITY OF THE THIRD AGE

## Study Group Calender 2018



Study Group and Convenors	March 2018	April 2018	May 2018
<b>All About Plants</b> <b>10am 4th Thursday</b> Gail Morrison 422 3717 Tonara Cuthell 902 9294	<b>Visit to Goat Island Marine Reserve</b> A talk on seaweeds and the benefit of marine reserves.	<b>Edible Mushrooms of NZ.</b>	<b>Plants grown by the early settlers.</b>
<b>Ancient History</b> <b>9.30am 1st Friday</b> Pam Bosch 425 6384	<b>Angkor Watt</b> A PowerPoint presentation Venue: 23 Willjames Ave, Algies Bay	<b>First Nations of America</b> Venue: 12 Piper Lane Snells Beach	<b>"Bits and Pieces"</b> Bring your contribution for an interesting session! Venue: 698 Wilson Rd, Warkworth
<b>Art Appreciation</b> <b>1st Wednesday - check for times.</b> Jan Imlach 422 2292 Jacky Whincop 422 9593	<b>Te Uru, Titirangi. (formerly Lopdell House)</b> Bus trip March 7th Meet 8.45am, depart 9am Shoesmith. Bookings: Deb Green ph 4227785 Cost \$20	<b>Sculpture Walk at Brick Bay.</b> From 9.30am April 4 Morning tea included. Cost \$21	<b>Vivian Gallery</b> May 2. Organisers: Helen Howard and Judy Woods. Details later.
<b>Book Talk</b> <b>10am 1st Tuesday</b> Shirley Shirley 422 3712	Judith Larsen Venue: 209 Sharp Road, Matakana.	Jenny Noakes Venue: 65 Anderson Road, Matakana.	Shirley Shirley Venue: 46 Ashmore Crescent, Warkworth.
<b>Current Affairs</b> <b>2pm 3rd Thursday</b> John Patrick 425 0001	Ian Lewis Venue: 44 Edwards Rd Warkworth	Peggy Gillman Venue: 99 Sharp Rd, Matakana	Sue Stevenson Venue: 641 Pukapuka Rd, Mahurangi West
<b>Developments in Medicine</b> <b>2pm 4th Thursday</b> Linda Moore 425 4959	<b>3D printing of human tissue</b> Keith Hopner Venue: TBA	<b>Sleep</b> Anne-Marie Brown Venue: TBA	<b>Some recent research in targeted treatments for cancer.</b> Ian Lewis Venue: 44 Edwards Rd, Warkworth
<b>Jazz Listening</b> <b>2pm 3rd Monday</b> Val Couling 425 5766	Bob Ward and Mike Nisbet Venue TBA	Dave Spivey Venue: 32 Blue Gum Drive Warkworth	Ron Ellender — DVD Venue: 25 Gordon Craig Place Algies Bay

Study Group and Convenors	March 2018	April 2018	May 2018
<b>Local History</b> <b>10am 4th Tuesday</b> Lorna Laxon 422 3562	<b>History afloat.</b> A river cruise with Phil, of Matakana River Cruises. Meet at Matakana wharf, 3pm. (All interested must book with David/Alison Grant, phone 4256788)	No meeting — school holiday commitments	‘Pot Luck’ presentation (i.e. all contribute) on the topic: World War 2 - how did it affect our area? Venue: Alan and Prue Dray, phone 4257205
<b>Music Appreciation</b> <b>1.30pm 1st Thursday</b> Peter Fieldsend 425 4685	<b>Music of Scotland – Not Just Bagpipes</b> Venue: 8 Piper Lane, Snells Beach	<b>Mainly Brass</b> Venue: 15a Coquette Street Warkworth	<b>Edvard Grieg</b> Venue: 14 Coquette Street Warkworth
<b>Play Reading</b> <b>9.30am 2nd Tuesday</b> Pam Ellender 422 2493	<i>The Circle</i> Somerset Maugham. Venue: 5 Matakana Road	<i>The Circle</i> continued. Venue TBA	Possible a Group-Playwriting Session Venue TBA
<b>Poetry Reading</b> <b>1.30pm 3rd Wednesday</b> Daphne Cocker 425 0570	<b>Lauris Edmund</b> Venue: Paunui Terrace, Snells Beach	<b>Blackout poetry</b> Venue: 609 Woodcocks Rd, Warkworth	<b>Hone Tuwhare</b> Venue: 8 Piper Lane, Snells Beach

### U3A WARKWORTH COMMITTEE MEMBERS

<b>President</b>	Mary Miller .....425 6301
<b>Treasurer</b>	Ernie Gidman.....425 9869
<b>Secretary</b>	Vivienne Mickleson 902 9207
<b>Membership</b>	Alison Coates.....425 6408
<b>Group Convenor</b>	Pam Ellender.....422 2493
<b>Almoner</b>	Chris Hoogerwerf ...425 5022
<b>Publicity</b>	Glyn Williams.....902 9333
<b>Hospitality</b>	Jean Mason .....425 7164 Mary-Alice Ryburn..425 0536
<b>General Committee</b>	Keith Hopner .....425 9955

### EX OFFICIO

<b>Immediate Past President</b>	Geoffrey Bowes .....425 4639
<b>Editor</b>	Ian Lewis .....425 7042
<b>IT/Web Editor</b>	Alan Spicer .....422 2685

### DUTY GROUP ROSTER 2018

<b>April 9</b>	<b>Jazz Listening</b>
<b>June 11</b>	<b>(Mid-Winter luncheon)</b>
<b>August 13</b>	<b>Local History</b>
<b>October 8</b>	<b>Music Appreciation</b>
<b>December 10</b>	<b>Play Reading</b>

The duty group needs to be at the Totara Park venue by 9.30 am to set out the chairs for the meeting and the tables for morning tea.

They also need to have tea and coffee ready by 9.45am. The food for morning tea will be provided by the committee. (Jean and Mary-Alice.)

After the meeting, the duty team puts everything away again, washes the dishes, vacuums the carpet and ensures the venue is left clean and tidy.

Opinions expressed in this newsletter are not necessarily those of the Committee.

# Presentations at the December 2017 General Meeting

## Christmas Poetry and Prose



Daphne Cocker



Lorna Laxon



Yolande Carter

Three members of the U3A poetry group ( Lorna Laxon, Yolande Carter and Daphne Cocker) gave a short presentation of Christmas poetry and prose at the December general meeting.

Knowing our audience was drawn from so many backgrounds with so many different feelings and memories of Christmas, we tried to reflect that diversity.

'Retrospect' (Eileen Fearn) a young British immigrant echoes the feelings of many immigrants at this season. 'Christmas at Te Parenga' by Bruce Mason and '24 December' (Joy Cowley) are firmly rooted in Kiwi scenes. A fragment from John Betjeman's poem about Christmas brings out the familiar English Christmas scenes of his childhood and wonders at the traditional nativity story.

A light-hearted theme was introduced with the parody 'On the Twelfth Day of Christmas' (David Daiches). This gentle,

heart warming tale of a small boy's faith at Christmas concluded our presentation with a room full of smiles and kindly laughter.

Daphne Cocker

## How Vanuatu Gained Independence: John Patrick



John Patrick

In the nineteenth century western Christian nations occupied many of the so-called "undiscovered lands" that Cook sighted. A group of these subsequently became the New Hebrides. This resulted in British, French and Australian citizens settling there for trade, land, conversion to Christianity and also an inhumane trapping of young men to work on the sugar plantations in Queensland.

After much colonial posturing and "diplomacy" the British and French agreed to possess the country together — the Condominium form of governance (facetiously called "Pandemonium") was established in, I think, 1907.

As can be imagined, both colonial powers pursued their own interests while claiming to be governing in the best interests of the tangata whenua! Much land was expropriated without any comprehension by most locals. Indeed I understand that, at one stage, more land was under claim in the Sydney Land Court than there was in the whole country!

The drive for independence resulted firstly from the fact that many schools were established by missionaries with the aim, mainly, of providing Christian leadership but at the same time providing modern education. In the 1950's and 60's there was a strong emphasis on education that was driven by churches in Australia and New Zealand and, to a lesser extent, by the French government.

In 1958 two young local men accompanied a colleague and me to New Zealand to get a taste of life here. They were surprised to see that my friend and I both had passports but they had only a scrap of paper. Thus began the drive for independence which finally came in 1980.

It is no accident that the young men and women fighting for a proper passport and independence were mostly educated in "mission schools". One person whom I taught as a little boy in 1956/57 later became Prime Minister of the country several times over and, in latter years, the Vanuatu (Our Land) representative at the United Nations.

John Patrick



# Presentations at the February 2018 General Meeting

## Glyn Williams: The Hill St Blues



An aerial view of the Hill St intersection. There are eight streams of traffic entering the intersection and six routes out, plus the entrance/exit to the since rebuilt Kowhai Park carpark and public toilets.

Glyn presented a comprehensive overview of the current state of the long-running saga of negotiations, deferments, “band-aid fixes” and future possibilities.

He has been involved in the negotiations for five years now — right back to Rodney District Council days.

- The Hill St intersection is frequently described as New Zealand’s worst intersection
- It has had a patchwork of interim “improvements” but hasn’t really changed much since 1975.
- The delays associated with it cause significant problems for the emergency services — including real difficulties for volunteer fire brigade staff who cannot get through the intersection to reach the station within the 8 minute response timelimit.
- Pedestrians find it quite dangerous to negotiate.
- The SH1 component (51%) is the responsibility of the national roading organisation, NZTA
- The local roads component (49%) is the responsibility of the Auckland Transport (AT) part of

the Auckland City Council.

- The capacity of the intersection was measured using the traffic counter rubber strips in the Auckland Transport December 2016 – January 2017 trial. The result: 3200 vph (vehicle movements per hour) is the maximum attainable throughput.
- This is the limiting factor behind the frequent queues in the traffic coming from Sandspit Rd (Snells Beach, Algies Bay, etc.), Matakana Rd (Omaha, Matakana, Leigh, etc.). Delays can occur at any time during the day, but expect delays of 30 minutes or more on normal working days around 4.00 to 5.30 pm.
- SH1 northbound traffic gridlocks in the mornings from Hill St back to Woodcocks Rd and queues can extend back past the BP station and McKinney Rd. Holiday traffic can have queues back up to the Pohuehue hill.
- SH1 afternoon southbound traffic can be a solid queue back past Hudson Rd. Peak holiday

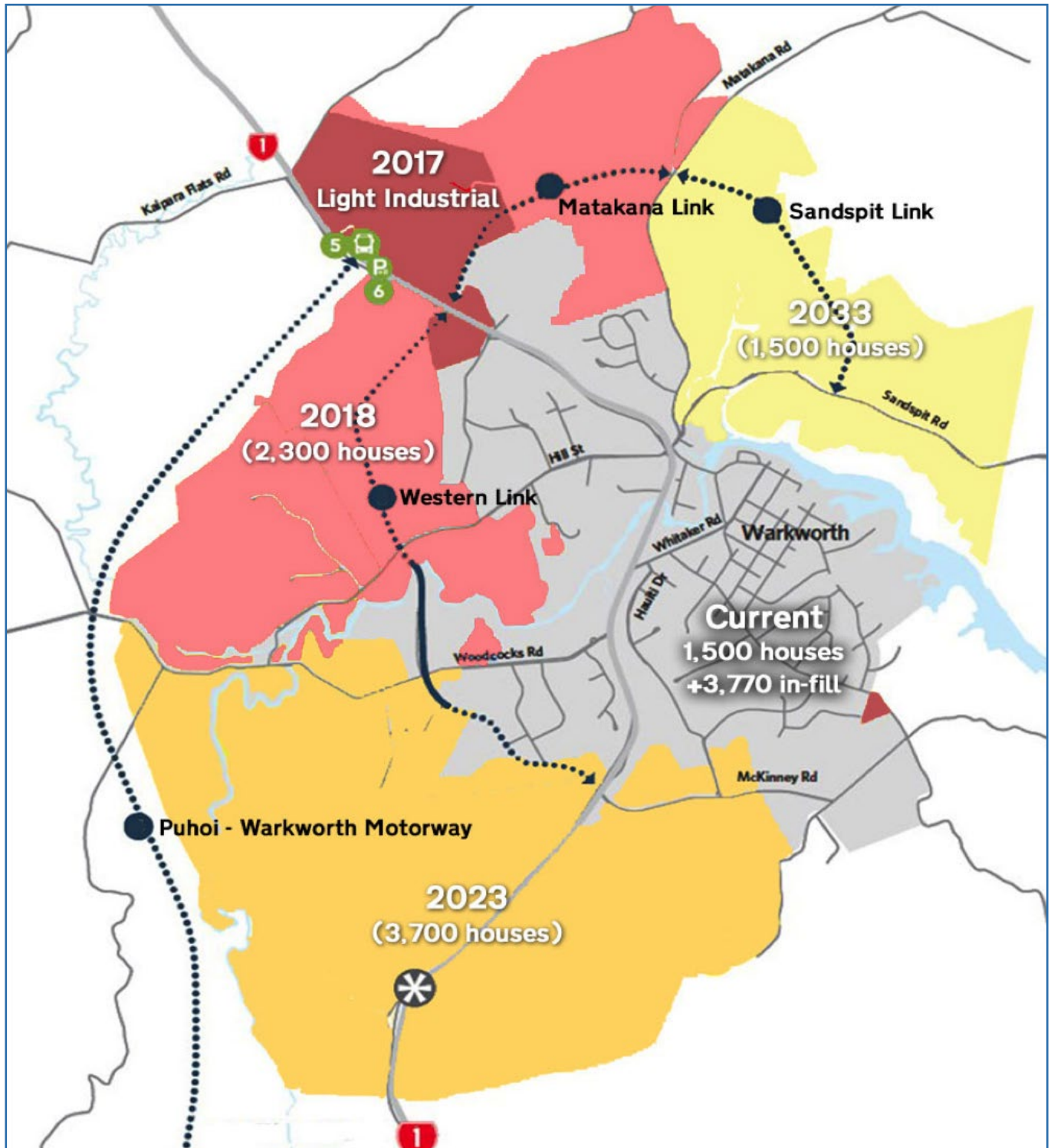
traffic is slow all the way from Wellsford.

### Add in the Growth Factors: The Unitary Plan

Warkworth is now designated as a satellite town for Auckland. The population is forecast to grow

600% — from the current 4,500 to 24,500, possibly as early as 2025.

The Warkworth region population (including the town) is projected to more than double from the current 24,000 to 54,000.



The Unitary Plan housing growth pattern proposed for Warkworth. Currently the only planned link to the motorway is to the north of Warkworth. The Matakana Link and the Western Link (Western

Collector) are not yet designated on the Warkworth Structure Plan.

The Sandspit Link is not mentioned in any current plans.



This is an extra 30000 people moving around and through Warkworth by car.

The Hill St intersection is one of the hub for all that traffic.

The housing growth planned is:

Location	Projected Start Time	Houses
Warkworth infill	Underway	+3700
Woodcocks Rd, Hudson Rd, Totara Park	2018	+2300
Warkworth South	2023	+3700
Matakana - Sandspit Rd	2033	+1500
	<b>Total</b>	<b>11200</b>

Using the regional average of 1.7 cars per household, that will add more than 10,000 cars to the local traffic as a result of the houses that are expected to be built in the first two stages, and ultimately more than 19,000 cars over the next 15 years.

### Critical Factors to add to the Spatial Plan

The spatial plan is the long-term outline plan for the area. It indicates land that is expected be allocated for specific uses — such as roading, hospitals, schools, park-and-ride carparks, shopping centres, housing, industry, etc.

The detailed allocation of the land use is part of the subsequent Structure Plans and Plan Change stages.

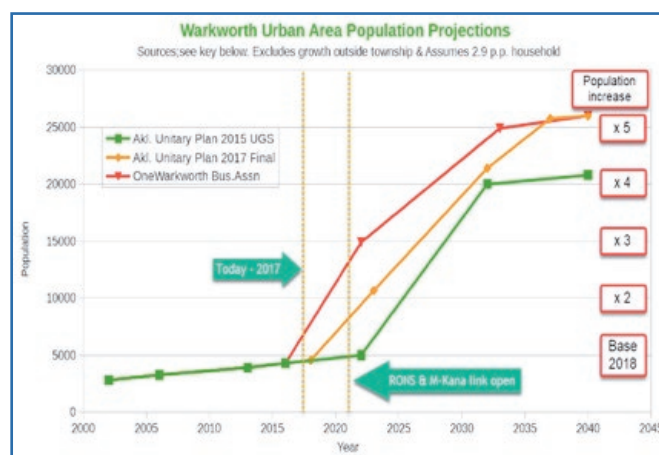
The motorway (a Road of National Significance) was planned before the Unitary Plan was announced. A southern connection to the motorway was not planned or designated, but now needs to be provided to accommodate the expansion of Warkworth in that direction as set out in the Unitary Plan. This would be a variation to the existing motorway construction contract — a process not lightly undertaken.

The Matakana Link from near the motorway exit to Matakana Rd is expected to be designated in the Structure Plan that the Council is now working on—and will then gain some protection for planning purposes. Its extension through to Sandspit Rd is not part of this Council work, so currently there is little to stop a developer getting a private Plan Change, subdividing that land and building on it.

The “Western Collector” route with a new link from opposite McKinney Rd to Morrison Drive and

using Mansell-Hudson Rds is intended to by-pass Warkworth and provide access to the commercial area up Woodcocks Rd.

There is as yet no designated zoning, budget or plans to complete this route. The existing Hudson/Mansell/Woodcocks roads are expected to serve as the “by-pass” in the meantime.



### Warkworth Population Growth Estimates

The One Warkworth Business Association has calculated that there is the potential for 3,770 houses as infill housing within the existing Warkworth Urban Area. 1,500 of these are underway now. (These figures are used in the previous table.) Urban growth projections assume that there is an average of 2.9 persons per household.

The initial Unitary Plan estimate and the “Final” one both underestimate the growth that is being driven by the expansion of Auckland.

By the time the motorway opens in late 2021, OneWarkworth estimates that under the current expansion pattern, we will have more than trebled the urban population in Warkworth.

By 2035 we are looking at 5 times the current urban population.

### Hill St Intersection Traffic Growth

Independent transport engineers have modelled the traffic flows for the intersection over the next 20 years and identified that the traffic attempting to use it will be well beyond its capabilities.

Even the latest NZTA projections confirm that there will be a significant increase.

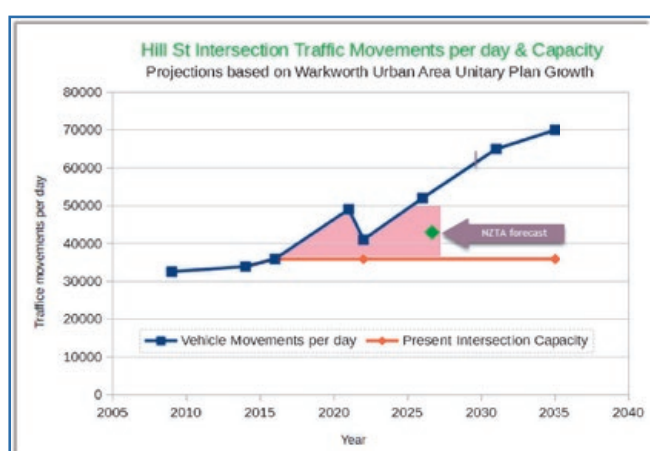
The current capacity of the intersection is about 36,000 vehicle movements per day.

The graph below shows how the population growth that is planned for in the Unitary Plan indicates that there would be 50,000 vehicle movements per day being attempted before the motorway opens in 2021—i.e. 39% more than the intersection is capable of handling.

Clearly this is an unsustainable situation.

Once the motorway opens, there will be a small reduction in SH1 traffic through the intersection, but traffic from the eastern bays wishing to access Warkworth will be undiminished.

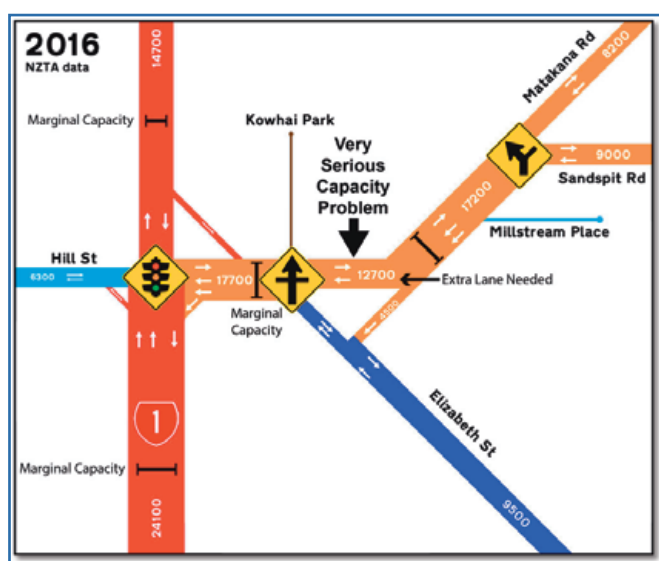
The graph data accounts for some eastern bays traffic using the proposed Sandspit – Matakana link to access the motorway or head north without using the



Hill St intersection.

Glyn showed us two diagrams that showed just how stressed the intersection is and will be.

The width of each coloured line represents the amount of traffic that is or will be attempting to use



that section.

The key traffic movements per day in 2016 were:

Sandspit Rd	9,000
Matakana Rd	8,200
Matakana/Sandspit intersection into Elizabeth St	4,500
From Elizabeth St - left to Hill St lights & right to Matakana Rd etc	5,000
Elizabeth St intersection to Hill St lights	17,700

The projection for 2026 is:



Sandspit Rd	18,200
Matakana Rd	13,000
Matakana/Sandspit intersection into Elizabeth St	6,760
From Elizabeth St - left to Hill St lights & right to Matakana Rd etc	6,840
Elizabeth St intersection to Hill St lights	20,642



## Summary: by 2026

- Sandspit Rd traffic will double.
- Matakana Rd traffic will increase by 60%  
(This assumes the Matakana Link is operative and some Matakana traffic is heading to the motorway or north via this road.)
- Elizabeth St traffic will increase by 43%
- SH1 traffic north of Hill St may decrease by 15%  
(Combined effect of highway and Matakana Link Rd)

## The Community Groups and Individuals that have worked to achieve progress:

The Warkworth Area Liaison Group  
The One Warkworth Business Association  
Local board members for the Rodney Local Board  
Local MP Mark Mitchell  
Councillor Greg Sayers  
Local planners and land developers  
Local surveyors and engineers  
Local Fire Services  
Matakana Coast Tourism  
The “Fix Hill St Now Action Group”

Glyn acknowledged that his presentation was produced with extensive help from these groups and individuals.

## Hints of Progress

Mark Mitchell has been actively involved for the last two years with the One Warkworth Business Association and the Warkworth Area Liaison Group to achieve a resolution. These meetings were originally 3-monthly, now they are 2-monthly.

A Spatial Plan for Warkworth was prepared by the “Spatial Plan Working Group”, a group of local Engineers, Planners, Surveyors, Valuers and Management and Communication consultants. Extensive public consultation was carried out last year and it was presented to Auckland Council in November 2017 to guide the Council’s subsequent development of the Warkworth Structure Plan.

(ref: Warkworth Spatial Plan - 2017 — Zest Communications & Marketing)

In August 2017, the Auckland Council gave the green light to the creation of a new Warkworth Structure Plan. Work was scheduled to begin late 2017 and be completed by late 2018. This is 12 months ahead of the previously scheduled time for work on the Plan to be undertaken.

The Structure Plan “fleshes out” the Spatial Plan, which is a bare “skeleton”. It will cover all of the Warkworth land zoned within the Rural Urban Boundary (RUB) as “Future Urban” (≈ 1000 ha).

The actual “Plan Changes” that are the next step to action the Structure Plan will be restricted to Warkworth north initially because of infrastructure issues.

The Spatial Plan, the Structure Plan and the Plan Changes are all to do with land-use and road access, etc. They do not address traffic flows and intersection woes!

Private developers can apply for a private Plan Change to enable them to subdivide a block without waiting for any of the above. The risk here is that such ad hoc subdivision pre-empting the formal Structure Plan may interfere with the provision of a road or other facility that would subsequently be a component of the completed Structure Plan.

## Interim Improvements

A number of excellent diagrams feature on the [FixHillStNow.org](http://FixHillStNow.org) website — including the ones used here.

A group of these diagrams illustrate the relatively simple initial improvements that could be made. These improvements are needed now, regardless of the ultimate overall redesign for the intersection.

- Change the flow out of Sandspit Rd by moving the traffic island and providing separate lanes for traffic heading into Warkworth town (Elizabeth St), heading to SH1, and traffic turning right towards Matakana or needing to be in the righthand lane at the Hill St lights.
- Reduce confusion over “Give Way” requirements, including moving the Kowhai Park exit to SH1 — as part of a slip lane that would serve SH1 southbound traffic wishing to turn left at the intersection.
- Install additional sensor loops and monitoring cameras. Gather accurate traffic data and identify serious congestion situations.
- The following additional actions are needed to address serious safety issues with the current layout:
  1. Instal a safe pedestrian crossing to Kowhai Park from the Elizabeth St side of the intersection.
  2. Extend the 50kph speed limit on Matakana Rd.
  3. Establish a right-turn bay for traffic turning into Melwood Drive.



THE UNIVERSITY OF THE THIRD AGE

## Urgency is the Key Factor

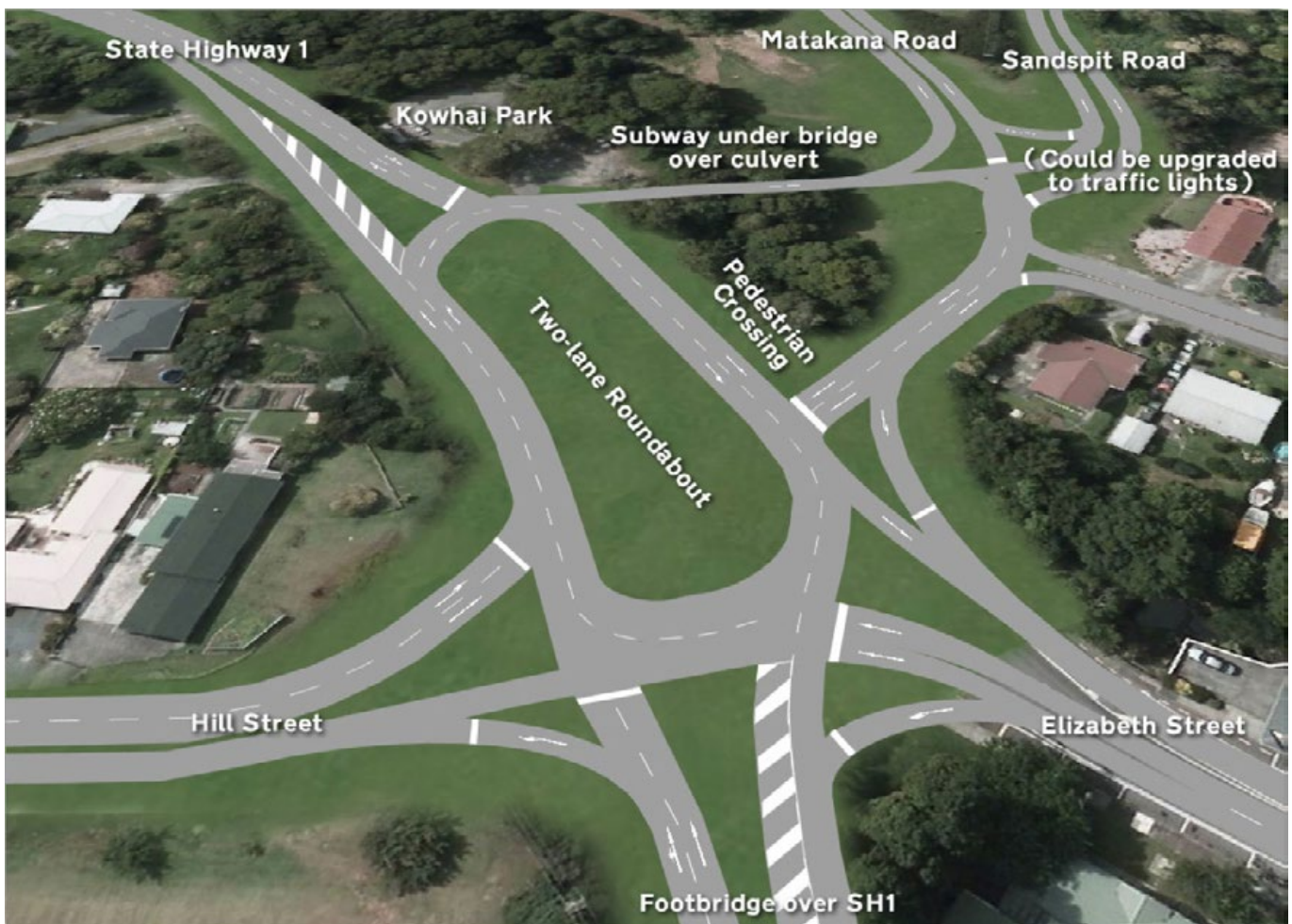
The current and planned urban growth under the City Council's own Unitary Plan is outstripping the Hill St intersection capacity—remembering that it is a key element of Warkworth's infrastructure.

NZTA's assertion that the traffic through the intersection will be reduced by the Road of National

Significance (RoNS) and the Matakana Link is not supported by their own figures.

The congestion delays at peak times on SH1, Matakana Rd and Sandspit Rd now are unacceptable. NZTA's position is that any intersection rebuilding will take place after the RoNS (2021), the Matakana Link and the Western Collector (after RoNS completion) are all completed.

## The Community Suggested Option - "The Pill"



This suggested design, produced by resident Warkworth traffic engineers, is a dual lane stretched roundabout.

As such it has

- an excellent distributor function, with enough distance between exits to give time for driver route decisions
- free flow — no lights.
- simple navigation — give way to the right.
- just public land involved.
- the ability to be built around the current

intersection, minimising construction interference.

It has the positive outcomes we are looking for in that

- the capacity of the intersection doubles.
- the feeder roads could be upgraded to traffic light control if the traffic flow warrants it some time in the future. (This is not uncommon in large roundabouts).
- much further into the future, a flyover to take the SH1 traffic could be added if the demand is there. That would also accommodate the north-south traffic on a vastly expanded Warkworth town.

The congestion needs to be addressed now. \$2M has been allocated by NZTA for the Hill St redesign. The construction phase needs to start as soon as the design work that is underway now is complete.

In addition, land to the south of Warkworth needs to be designated for a southern motorway interchange to service the large housing developments set out in the Unitary Plan. This will need to be incorporated into the Warkworth Structure Plan due to be started this year. Construction should logically be part of the RoNS project.

### The Fix Hill St Now Action Group

This group was formed, under the auspices, and in support, of the Warkworth Area Liaison Group.

It was a product of the frustration over the prolonged delays and procrastination that have dogged the issue since the Auckland City was formed.

It consists of two senior traffic engineers, a senior management consultant, a Hearings Commissioner and a retired sales and marketing manager and former business owner.

They conducted a media campaign that included Facebook, public meetings, advertising hoardings, and a 30 minute segment in Greenstone TV's "Gutsful" programme.

This led up to the creation of a petition, in Glyn's name that gained 7,320 signatures.

The petition was presented to the Transport and Infrastructure Committee in Wellington on July 28, 2017.

The petition read:

*"That the House of Representatives recommend to the Government, as part of the New Zealand Transport Agency's 'SH1 Warkworth intersection improvements' project, that it prioritise design, funding, and works improvements for the Hill Street intersection (being the intersections of State Highway 1, Hill Street, Elizabeth Street, Matakana Road, Sandspit Road, Millstream Place, and Kowhai Park) to address current and future safety and congestion issues and commence necessary works before any other nearby works exacerbate congestion at the intersection".*

The change of Government as a result of the 2017 elections has changed the people involved in the processes at government level. At this point the status of the petition in the new Government is as yet unknown.

What did follow the presentation of this petition was:

- NZTA and AT announced funding for a \$2M design and investigative package. No funds were allocated for construction.
- the Detailed Design consultant was finally announced in December 2017.

### Issues yet to clarify:

- The Sandspit Link road. This is only an 'indicative' line in the Spatial Plan. The Structure Plan needs to confirm the route for it and Plan Changes made to protect it.
- Funds for construction of the Matakana Link, the Sandspit Link and the Western Collector need to be made available so that these links are ready when the motorway opens.
- The band-aid construction scheduled to start in a few months will at least provide a lights-controlled pedestrian crossing across the intersection and lights control on the SH1 southbound slip lane. What it doesn't do is move the exit from Kowhai Park away from the centre of congestion and cross-flow traffic coming from Elizabeth St.

### References

- The Fix Hill St Now website: [www.FixHillStNow.org](http://www.FixHillStNow.org)  
In particular, the "Design" section.
- The Warkworth Spatial Plan produced by the team of local specialists. This is a PDF to download. [www.zestcomms.co.nz/index.php/download\\_file/view/35/96/](http://www.zestcomms.co.nz/index.php/download_file/view/35/96/)
- Reports on the Auckland Council "green light" for the Warkworth Structure Plan. Search on "Warkworth NZ Structure Plan" and you will get several newspaper articles covering this step forward.

### French Language Course:

Hilary de Hilleran is offering to run a group for members who would like to learn some French language.

Whether purely for interest or as preparation for travel in French speaking parts of the world.

Contact Hilary 422 6683





### Mini-presentation:

#### Chris Hoogerwerf: 1942-5 — My Years Spent in a Japanese Prison Camp



Chris was a young girl with her family in the (then) Dutch East Indies. Her father worked for Royal Dutch Shell.

In 1942, the Japanese invaded the territory and proceeded to round up all the European residents and put them into internment camps.

Men and boys over 12 years of age were separated off from the women and children and the two groups were confined in different camps.

Chris recalled that they were allowed to take any items they wanted to with them, but they had to carry them themselves.

Initially they were kept in existing houses, but later moved to native-built huts.

There was no privacy at all in the camps — all the women and children were in basically a communal living space.

Chris's father was Dutch, but her mother was German. This posed some extra difficulties as the Japanese were very suspicious of potential spies.

Food was very basic - rice and some vegetables. Occasionally the Japanese in charge of the camp would slaughter a pig for their own food, and add the entrails to the food supply to the detainees.

Medicines and medical supplies were not provided.

Chris and her sister and mother were fortunate that in the camps they were detained in — they did get moved around — they were never short of water as some other camps were.

There was no soap, so washing themselves of their clothes was difficult.

Writing materials were only what the detainees had managed to bring with them. There was no schooling and no reading material.

Tragically, Chris's father died in the men's camp.

When the Japanese were defeated in 1945 and withdrew from the Dutch East Indies, the detainees were offered resettlement by the Allied Forces.

Chris's mother decided to take the New Zealand option, so they were transported to Wellington. There Chris and her sister were enrolled in the local school, but faced the enormous difficulty of knowing no English and having missed three years of schooling completely.

Later an option came to return to the Netherlands. They sailed from New Zealand to Australia, then boarded an ex-troopship for the voyage home.

Chris still had grand-parents alive in Rotterdam, so she recalls that of the people she knew on the ship, her family was the only one going back to a house — the one her grandparents vacated and moved to the country to give them a home.

The Dutch Government had set up a condensed education programme for these children who had missed so much, so Chris crammed three year's schooling into one year!

In the 1950's, Chris and her husband returned to New Zealand, liked it, and decided to move here permanently.

### U3A Situations Vacant

#### Archivist

Ina Shaw is retiring from her position as archivist for the Warkworth U3A. For many years she has maintained the collection of physical photos, clippings etc. in a large book — a resource that members really enjoy browsing through.

The job promises to be not onerous, but interesting! Immediate start, but with lots of help and guidance. See Ina or Mary

#### Digital Archivist

This is a new position, complementary to the Archivist position, which will be developed over the next few months.

Currently, we effectively have a digital archive of the newsletters as copies are stored on the U3A Warkworth website, going back to February 2005. That doesn't accommodate the digital images etc, that will be of record, but won't necessarily have been used in the newsletter.

Video presentations or video clips from field trips could be stored here too.

Several modes of durable long-term storage of digital files are being considered.

Again, the job won't be difficult, but will be an interesting one as we assemble the resources.

See Ian or Alan



## Milestone: Grevis Goetz's 100th



Grevis, with U3A President Mary Millar and Immediate Past-President Geoffrey Bowes at the RSA where the RSA and U3A combined for a surprise lunchtime celebration of Grevis's 100th birthday on February 2<sup>nd</sup>. Grevis's actual birthday was January 24<sup>th</sup>.

### Grevis Goetz

If a definition of being "Holy" is that that person makes you feel better about yourself — then Grevis fits that description better than almost everyone we know. He also has a "wicked" sense of humour.

Son of an M.P., Grevis served in the NZ Air Force in the Pacific during the Second World War. He subsequently was ordained into the Anglican Church, serving in parishes including St. Andrew's in Epsom and also as the Auckland City Missioner before retiring to Point Wells and Warkworth nearly 30 years ago.

Here he was fully active in the community: playing bowls, in Probus club and U3A as well as a regular supporter of the RSA and the local Anglican Church, to name some of his activities.

Without a doubt his commitment to his marriage and care for his wife Sadie during her long debilitating illness impressed us all.

Grevis also has the gift of appreciation and it was impossible to do anything for him without being it being fully acknowledged. Well read with a ready wit he is good company and a pleasure to visit.

May your Summerset years be great, Grevis!

Malcolm Clague

### Footnote

Glyn Williams, on meeting Grevis at U3A, discovered during the course of the conversation, that his and Grevis's great-grandparents were brother and sister. They arrived on the same ship, the Monarch, in 1849, as the first white settlers in Akaroa.

### Proposed Short Course:

Gerard Zwier has proposed a short course starting either March 13 or March 20. The suggested time is 3–5pm, at his home, 28 Awanui Crescent Matakana.

#### **Biocentrism revisited. The origins of reality.**

In 2009 Dr Robert Lanza, a scientist in the fields of regenerative medicine and biology, and Bob Berman, an astronomer, published their book — *Biocentrism: How Life and Consciousness are the Keys to Understanding the True Nature of the Universe*. The book put forward the rather controversial notion that, instead of assuming that we live in a physical world which exists independent of life, it is life itself that created the physical world.

They argued that the physical world we perceive around us is only apparent because space and time are not absolute independent realities but rather tools of the human and animal mind and that the objects and processes we see and hear derive their existence from our perception of them.

This U3A course is based on my own book — *Knowing Being*, with the subtitle, *Reality is a Function of Being*, which endorses the main line of argument of Lanza & Berman's book but deviates from it in a number of important ways.

Participants will need to have a copy of the book (supplied free of charge) in order to be able to discuss aspects of this new perspective after reading the book.

I want to emphasise that this is not a course in philosophy; it is more a critical review of the basis for believing in a physical reality.

The discussion will range from psychology to biology (in particular evolution) to physics, astronomy, history (in particular the history of science), ethology (the study of animals in the wild) and even parapsychology ...

Those familiar with philosophy will note that the approach taken is loosely based on the idealist school of philosophy.

Is biocentrism really a new paradigm or is it just plain nonsense?

Contact Gerard Zwier 09 422 9718 to confirm your interest.

### U3A Network Range of Courses

This wide-ranging list of courses and groups was compiled by the U3A Auckland Network from their members.

Some of these U3A groups are already catered for in existing community groups in Warkworth, but others might prompt the establishment of some new ones in U3A Warkworth.

Any bright ideas or requests to the Committee!

**Anthropology**  
**Antiques and Collectables**  
**Archaeology**  
**Architecture**  
**Asian Studies**  
**Astronomy**  
**Bridge**  
**Bush, Sea, Beach and Birds**  
**Computers**  
**Creative Audio-Visual**  
**Creative Writing**  
**Earth and the Universe**  
**Geology**  
**Family History**  
**Famous and Infamous**  
**Film and Stage Appreciation**  
**Financial Matters**  
**French, German, Greek, etc**  
**Geography**  
**Humour**  
**Inventors and Inventions**  
**Maori Studies**  
**Natural World/Bugs**  
**Navigation**  
**Photography**  
**Psychology**  
**Remarkable Women**  
**Renaissance**  
**Science**  
**South Pacific Islands**  
**Travel**  
**Wine-making and Wine Appreciation**  
**Wonders of the Modern World**  
**World Explorers**  
**World Religions**  
**World War I and II**

